

 Konfurb



## Konfurb Arco. Series

[buroseating.com](http://buroseating.com)

Konfurb by  
**buro**  
ergonomics at work®

# Konfurb Arco.

## Dynamic versatility.

Introducing the Konfurb Arco Series, an agile modular seating system with exceptional design and versatility. This series allows you to create dynamic environments that can effortlessly transform from collaborative hubs to individual workstations or relaxation areas. Create your own innovative workspace with a relaxed ambience by selecting a seating module of your choice. Choose from our range of five seating pieces, with straight or curved forms, and with or without a backrest. This modular approach enables easy reconfiguration to suit various purposes and as you need.

### Configuration & Inspiration.



**KON570**  
Convex



**KON571**  
Concave



**KON572**  
Concave - no back

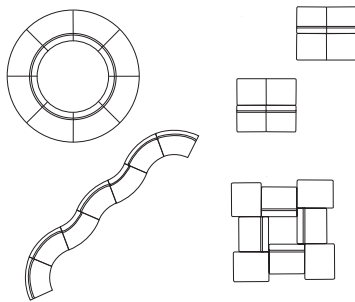


**KON574**  
Square

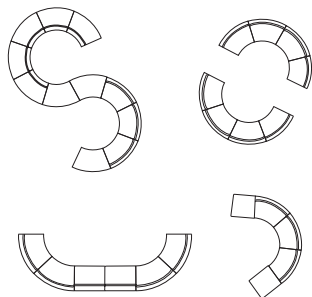


**KON575**  
Square - no back

**Public** configurations typically feature outward-facing layouts designed for individual use.



**Collaborative** configurations often utilise inward-facing layouts to facilitate interaction between two or more people.



## Product Codes.

## Fabric Meterage. (m)

1.6m wide

### Arco Project Models<sup>3</sup>

Convex	KON570
Concave	KON571
Concave - no back	KON572
Square	KON574
Square - no back	KON575

Convex	Back 1.2 / Seat 1.5
Concave	Back 1.4 / Seat 1.55
Concave - no back	2.6
Square	Back 1.3 / Seat 1.4
Square - no back	2.3

## Features.

- Solid timber frame
- Commercial grade high density foam
- 20mm glides

### Custom Options.

- Linking brackets to join modules together.

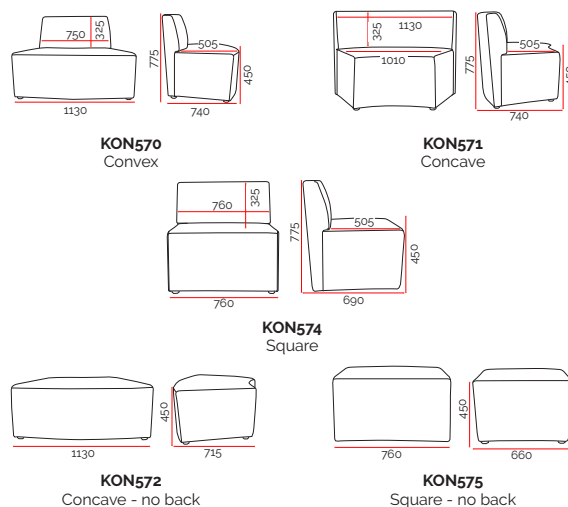
## Specifications. (mm)

Convex	1130w / 740d / 775h
Concave	1130w / 740d / 775h
Concave - no back	1130w / 715d / 450h
Square	760w / 690d / 775h
Square - no back	760w / 660d / 450h
Seat Height	450h

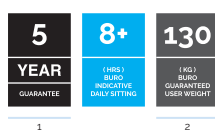
## Colours.



See pg 4-6



## Quality Assurance and Accreditations.

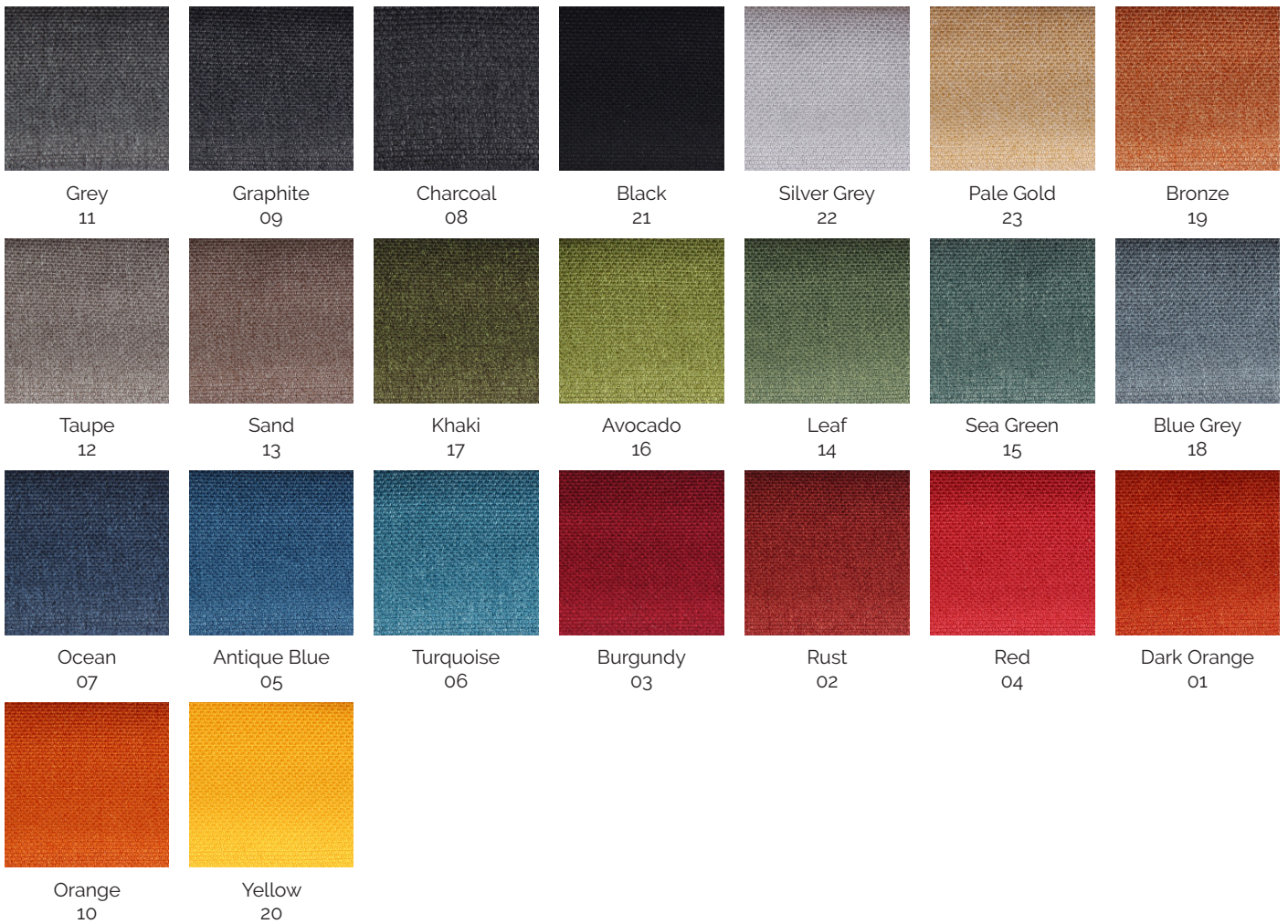


1

2

Select from our Konfurb fabric ranges to suit your interior (12-week lead time applies).

### Konfurb Ara.



### Konfurb Via.



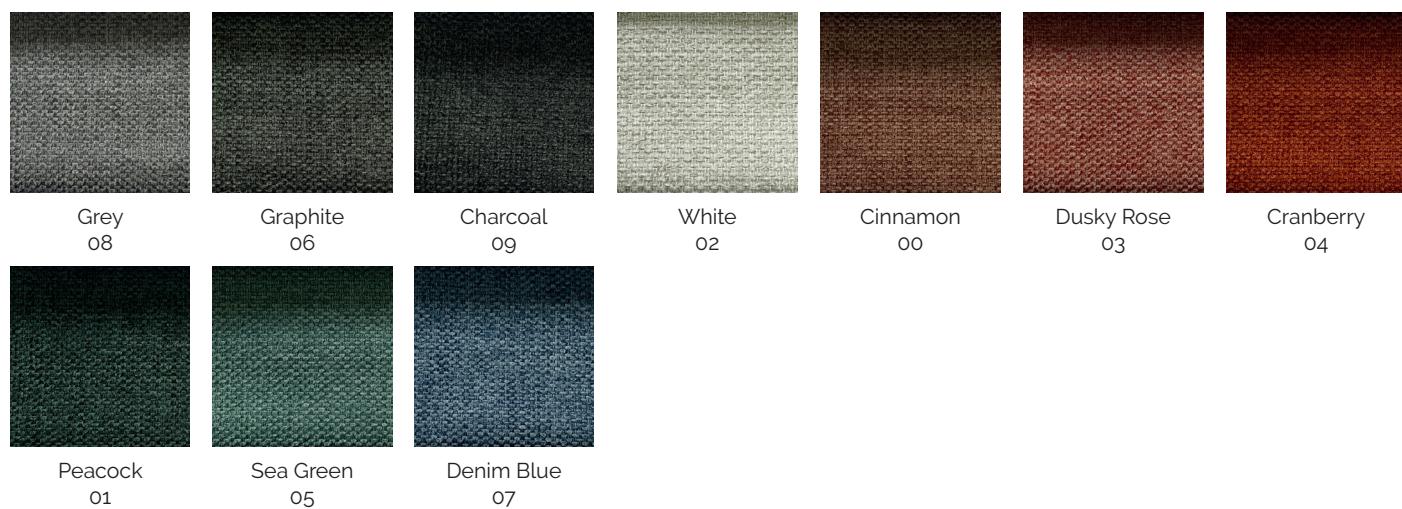
### Konfurb Terra.



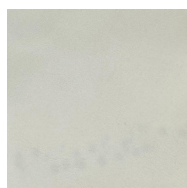
### Konfurb Geo.



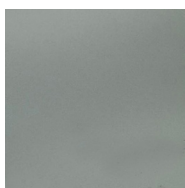
### Konfurb Cove.



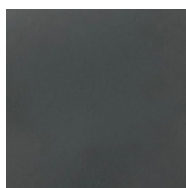
## Konfurb Dune PU.



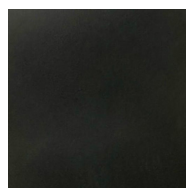
Ivory  
01



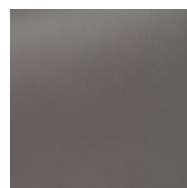
Fog  
23



Charcoal  
04



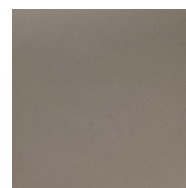
Black  
06



Ash  
03



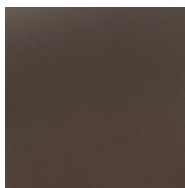
Sand  
24



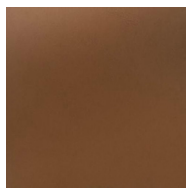
Dark Taupe  
02



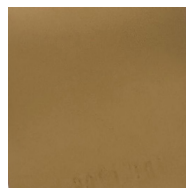
Taupe  
20



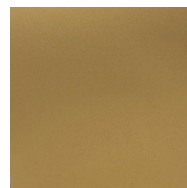
Dark Brown  
05



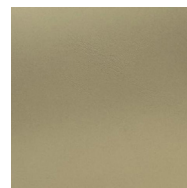
Caramel  
17



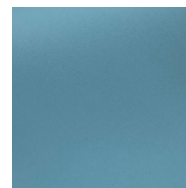
Golden Sand  
10



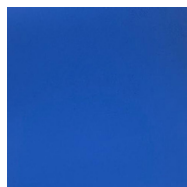
Biscotti  
21



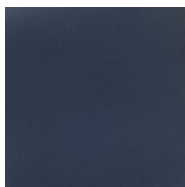
Beige  
18



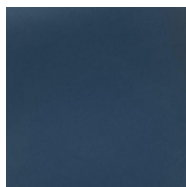
Sky Blue  
25



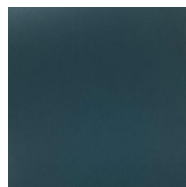
Bright Blue  
30



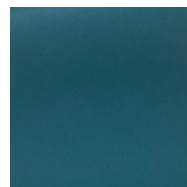
Navy  
15



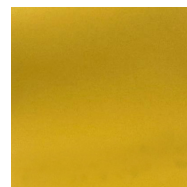
Ocean Blue  
14



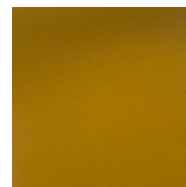
Peacock  
26



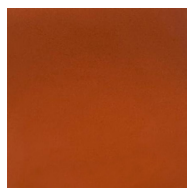
Teal  
31



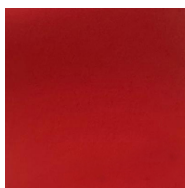
Yellow  
32



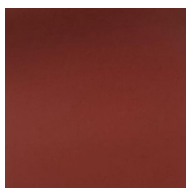
Mustard  
13



Orange  
34



Red  
33

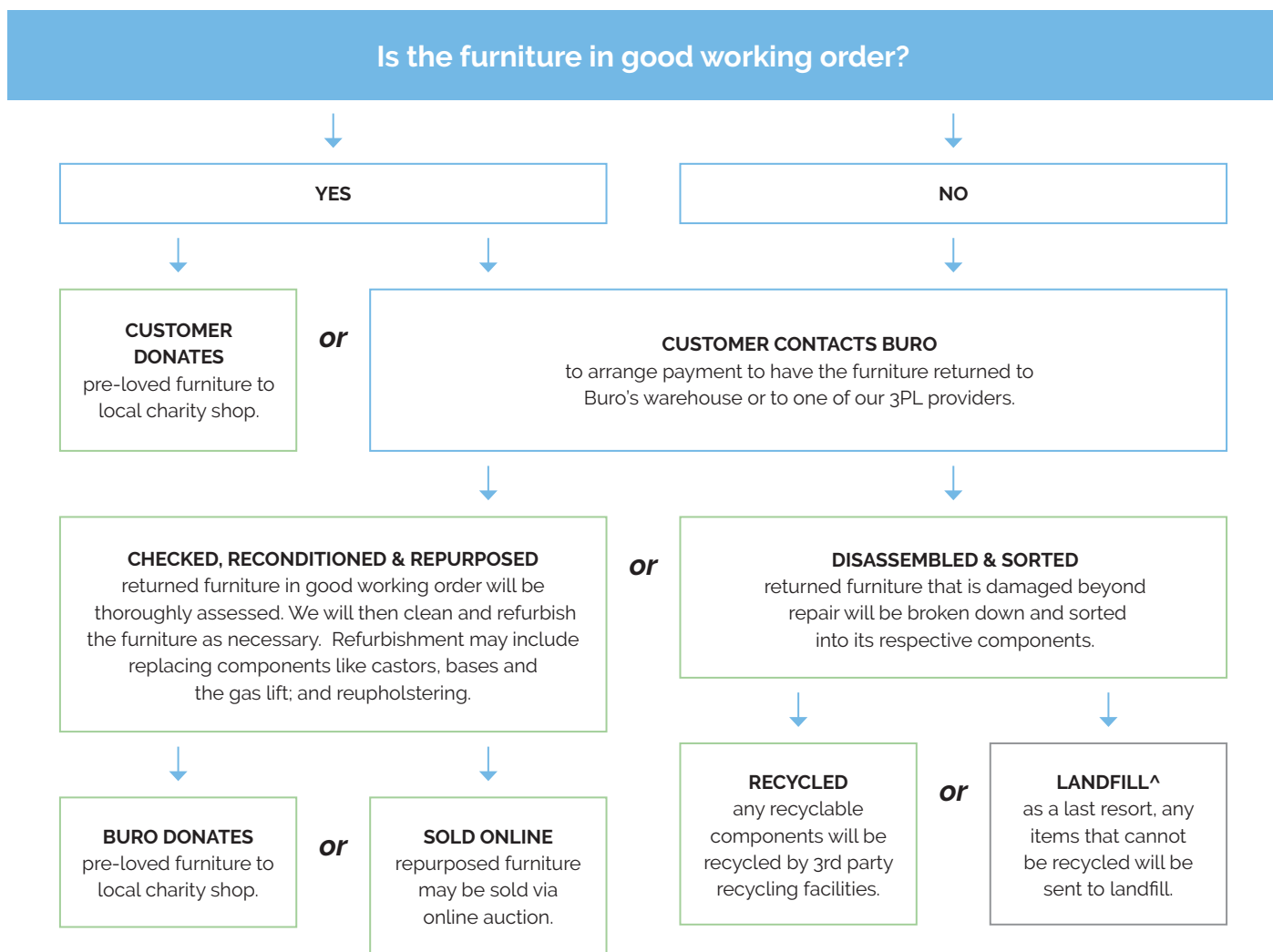


Ruby  
22



# Buro Product Stewardship Programme.

We encourage repurposing and recycling of pre-loved office furniture to reduce our impact on the environment. When a customer has Buro furniture\* that they wish to dispose of, we apply the following steps to determine the most appropriate method.



To mitigate our CO2 footprint over the next 50 years, we're working with **Trees That Count**, a conservation charity dedicated to planting native trees.

By funding the planting of native trees, we're supporting efforts to increase biodiversity across New Zealand.

**Buro** proudly support **Greening Australia**.

Greening Australia has been restoring Australia's unique landscapes and protecting biodiversity at scale through collaborative, science-based programs for over 40 years.  
[www.greeningaustralia.org.au](http://www.greeningaustralia.org.au)

As a **Sedex member** we are committed to being a responsible business, sourcing responsibly, and improving ethical standards and working conditions within the supply chain.

\*Qualifying furniture must be Buro branded product (Buro Seating, Konfurb, Mondo), or a partner exclusive brand.

^Many of our products are GREENGUARD certified for safe emission levels. This reduces the environmental impact when sending any components to landfill.